



VONDOM

NOVELTIES 2022

VONDOM

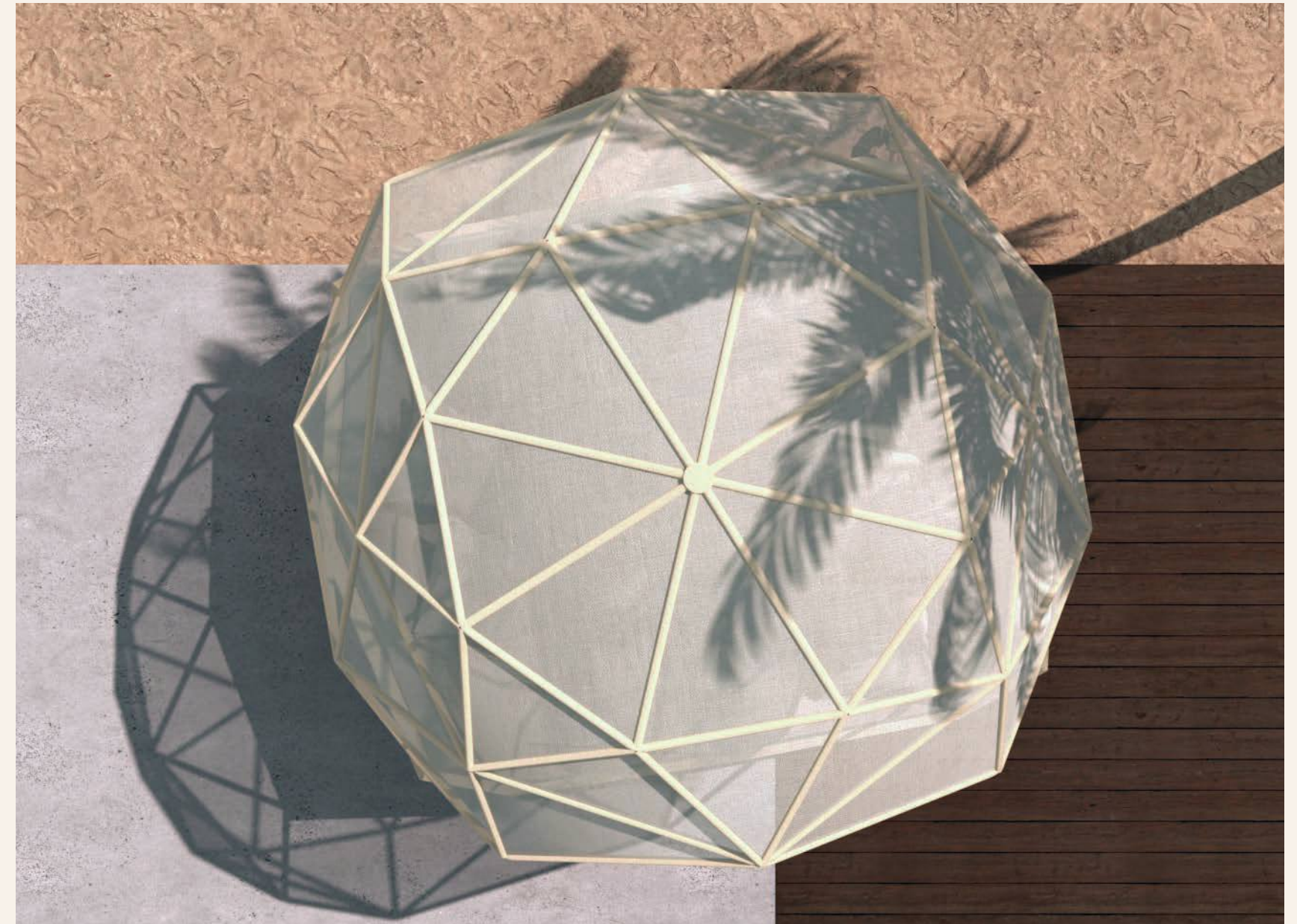
NOVELTIES 2022



Arquitect

Ramon Esteve graduated in Architecture from Escuela Técnica Superior de Arquitectura de Madrid (ETSAM) in 1990. He founded Ramon Esteve Estudio de Arquitectura in 1991, working on both architectural and interior design projects and also other fields such as industrial design and art direction at the national and international area. Harmony, serenity and essentiality are some of the constant features of Esteve ' s work and become symbols of his will to provide to the habitat more than just buildings. As a result, embracing atmospheres where to enjoy unique experiences are created.

Ramón Esteve



Iglu

The dome is formed by linked triangles with a light fabric that provides an interesting set of lights and shades. Iglu is conceived as a shelter place for the user, inviting us to relax and enjoy.

The new Iglu daybed, designed by Ramon Esteve for Vondom, is inspired by Fuller's mid-20th century geodesic domes. Conceived as a place for shelter and enjoyment, the item shows geometric forms on the outside while the inside has softer lines and shapes.





Gatsby

The new Gatsby sofa, designed by Ramon Esteve for Vondom, is the extension of the already existing collection, born with the polycarbonate table top lamps that have the shape of engraved glass.



art
deco



Modular

Its outside channeled surface keeps the same fluted glass style of the lighting fixtures, which takes us back to the Art Deco times and those crazy 1920s lived in the US.







Pixel

The Pixel collection is composed of different modules, which allow you to create infinite shapes; from linear sofas, a chaise longue, sofa corners, and even a lounge bed. This year this collection has grown, adding new modules.

easily
combined







Puffs

Designed by Ramón Esteve for Vondom, this collection is inspired by small color elements that make up an image, a multitude of possible combinations, which are based on its layout.







outdoor life

One of its main features is its low seating, designed for more intimate use, it is ideal to chill out. Manufactured in rotational molding, its versatility is enhanced thanks to its upholstery, available in a wide variety of fabrics and finishes.

Faz

Due to its submersible nature, the new FAZ lounge is perfect for pool environments.





Sunbed

As part of the FAZ collection, the new Sunbed designed by Ramón Esteve for Vondom is born. Its faceted shapes are elegantly softened to accompany the posture of the body and embrace it, seeking maximum comfort to generate moments of relaxation and enjoyment.

Pots

Pieces of different sizes that join the great FAZ family, inspired by the faceted mineral forms that we find in nature.



STUDIO. Outdoor Rug.



Ø2m

62100

62150



Ø3m

62101

-



2,5x1,5m

62102

62151



3x2m

62103

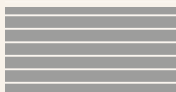
62152



3,5x2,5m

62104

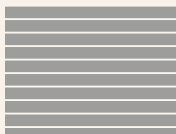
-



4x2m

62105

62153



4x3m

62106

-

RUG's TYPE

1

2

new complements by Studio Vondom



Pleita 61106

Outdoor rugs made from recycled plastic

The new rugs are soft and fresh, as well as other very pleasant sensations to the touch that you'll also enjoy when sitting on ergonomic upholstery that will transport you to a place where well-being prevails.



Pleita 61108

recycled plastic bottles

Pleita

The new rugs come in a wide range of neutral shades and vibrant tones that blend perfectly with Vondom furniture finishes.

Pleita 61108



Pleita 61103



Pleita 61104



Pleita 61105

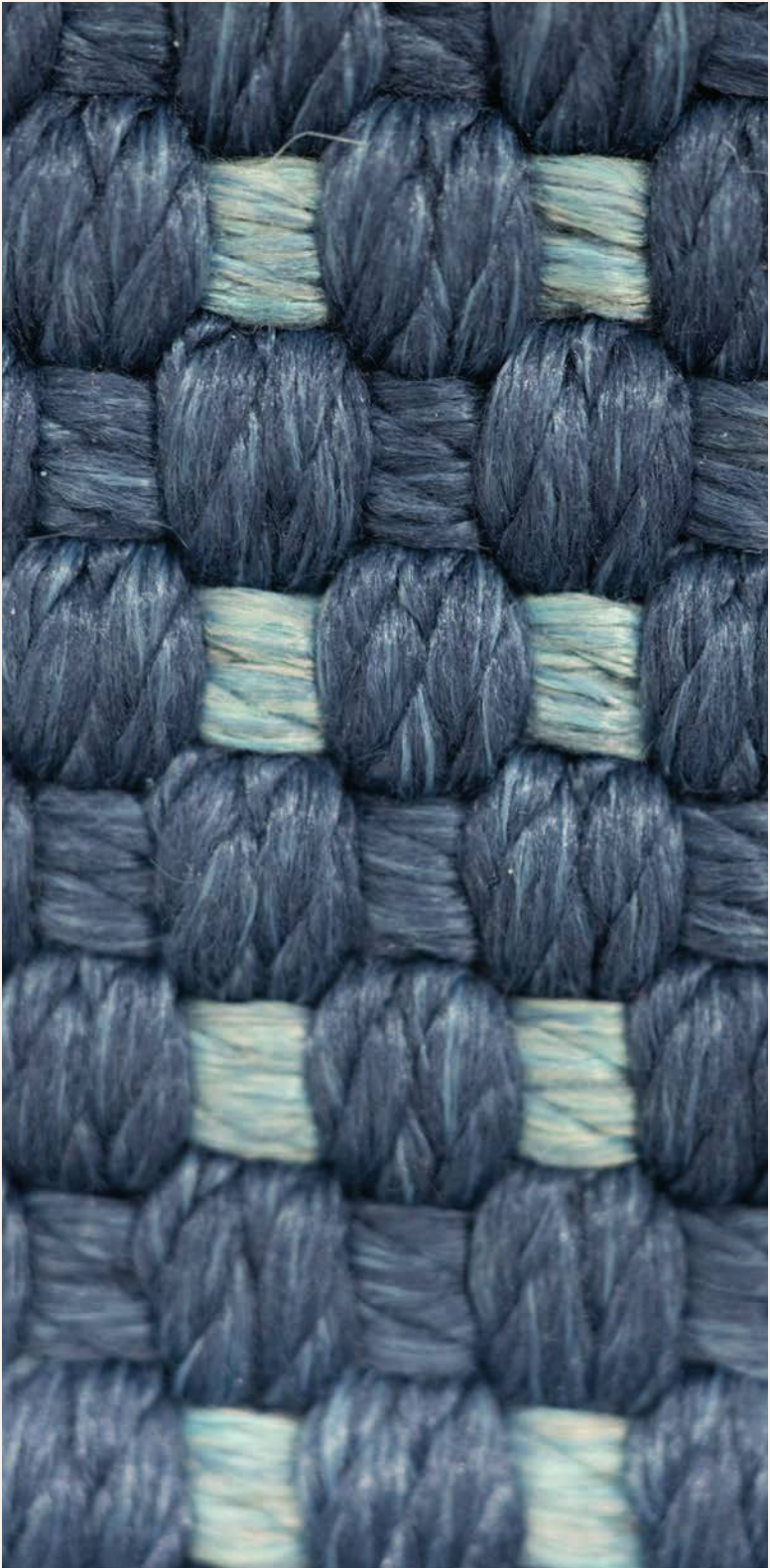


Pleita 61105



Pleita 61107

sustainable
future



Pleita 61107



Pleita 61102

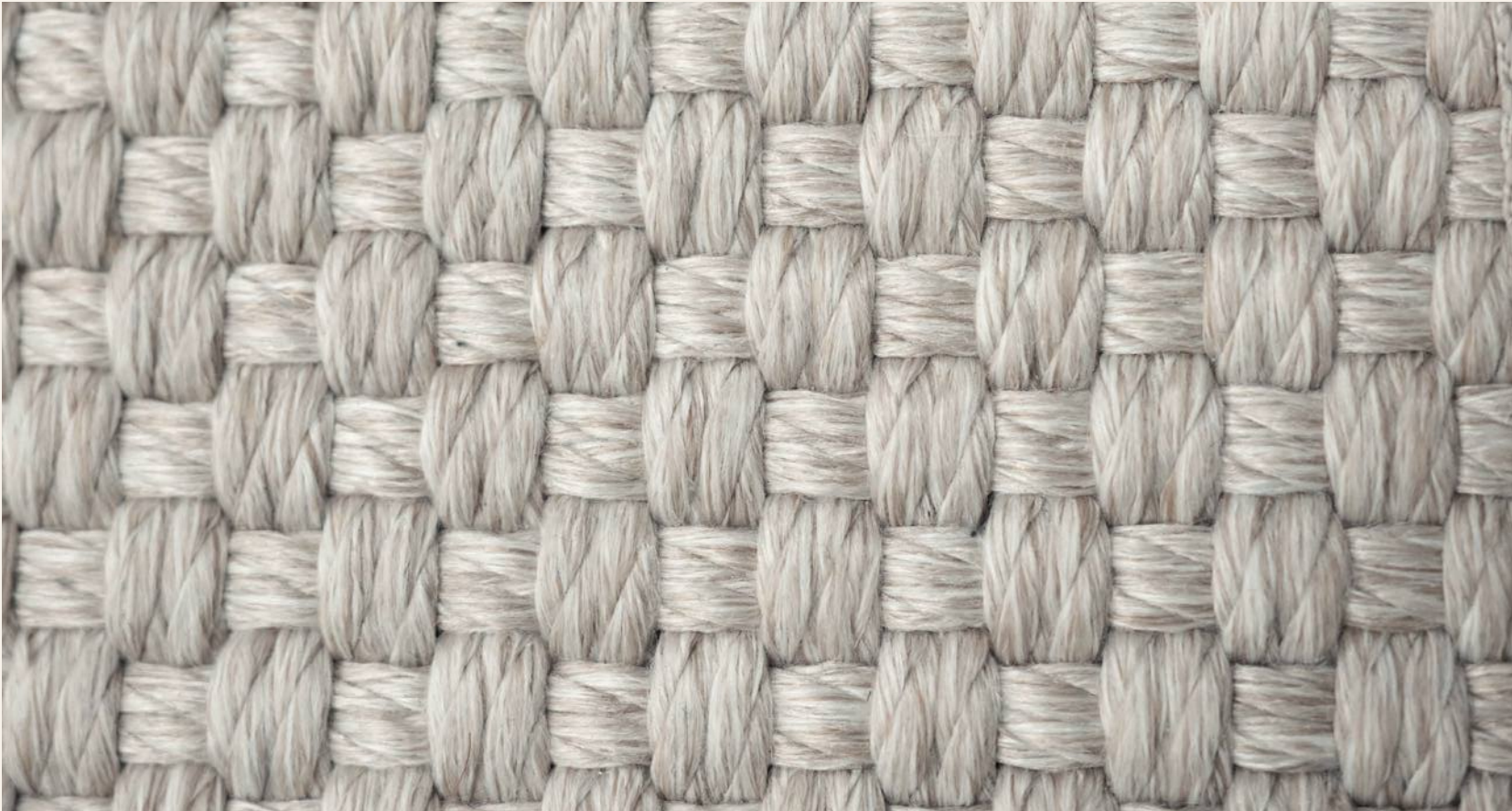
recycled
plastic



Pleita 61102



Pleita 61101





Eras 61001

Eras

As they have UV treatment incorporated, they resist water and high temperatures, and they are also easy to clean and maintain. They are the perfect decorative complement; adding a warm and cozy touch to wherever you place them.



Eras 61001



Eras 61004



Eras 61004

soft and fresh

Eras 61003



Eras 61003



Eras 61002

outdoor
spaces



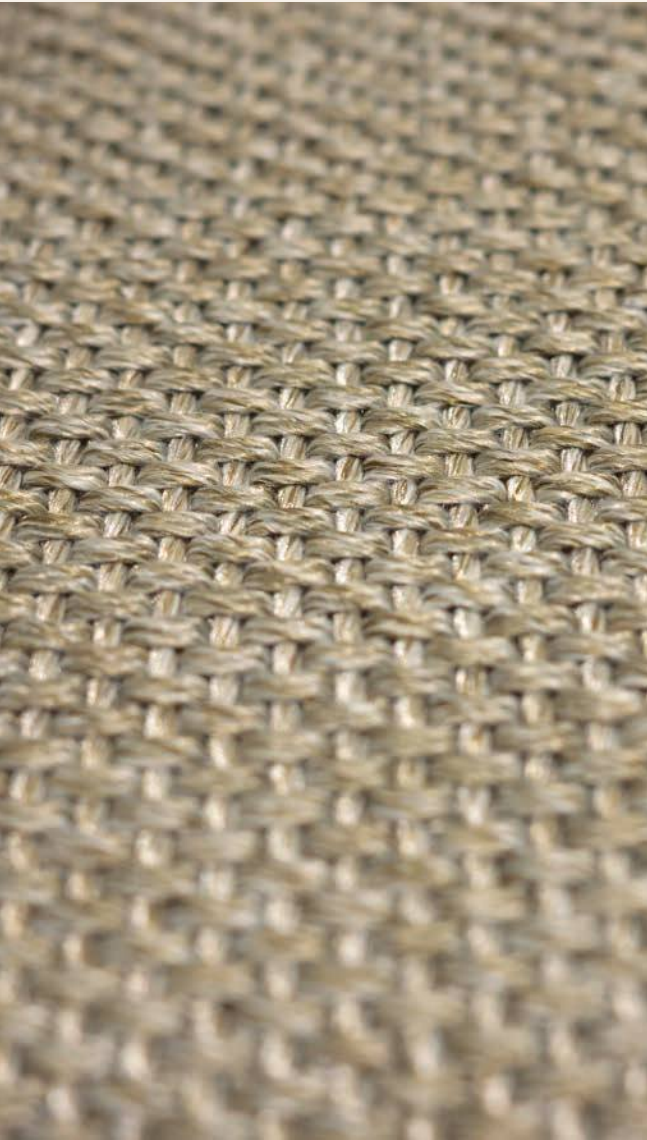
Eras 61002



Lares 61201

Lares

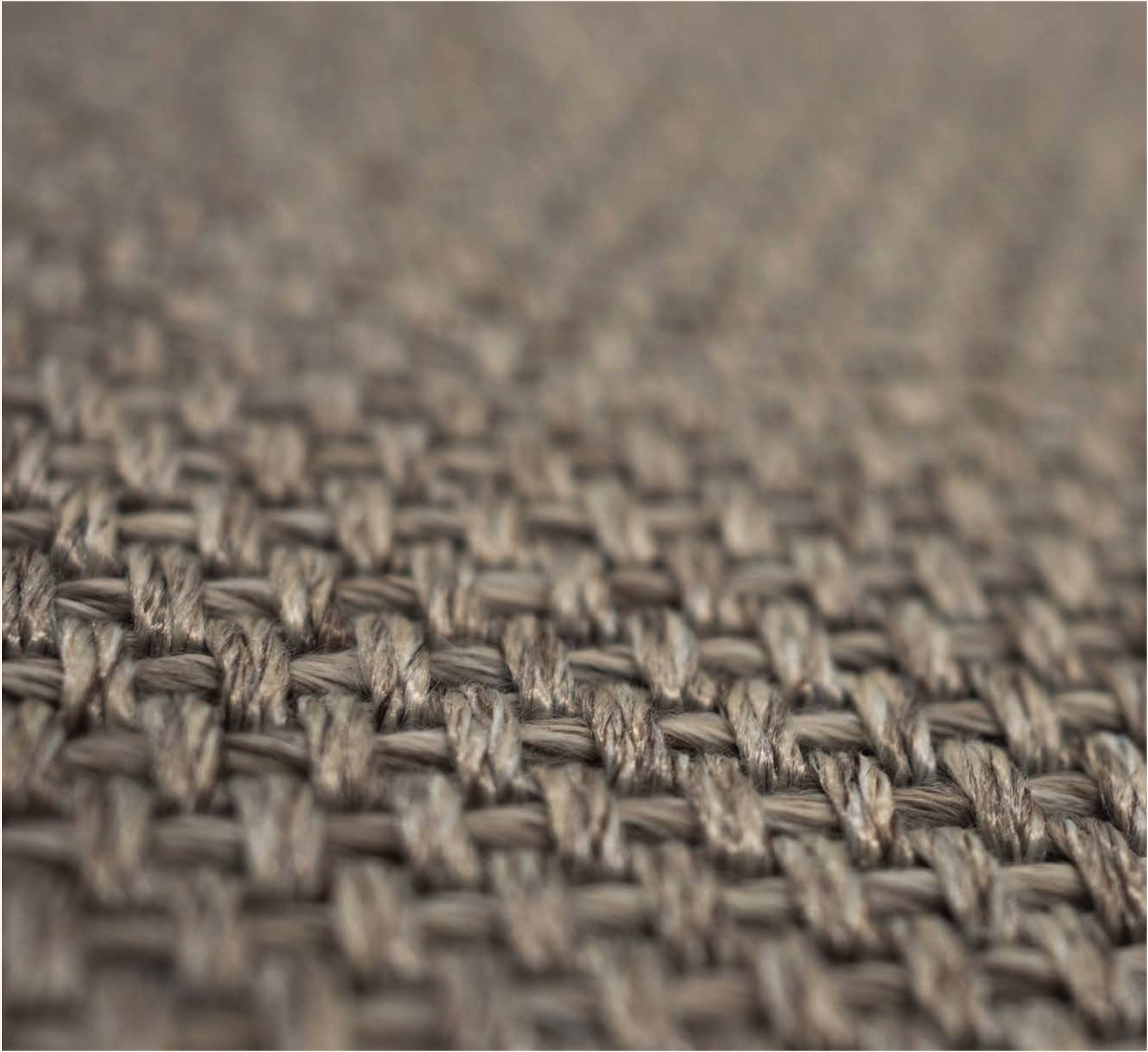
To sum up, at Vondom we offer rugs with extraordinary levels of performance, durability, and design. Tailored and approved to withstand the toughest outdoor conditions. Stain-resistant treatment, waterproofing, resistance to UV rays, cold cracking, and mould spores, ensure that our furniture can be used in all outdoor spaces and areas with high levels of humidity and chlorine, such as spas and indoor swimming pools.



Lares 61202



Lares 61202

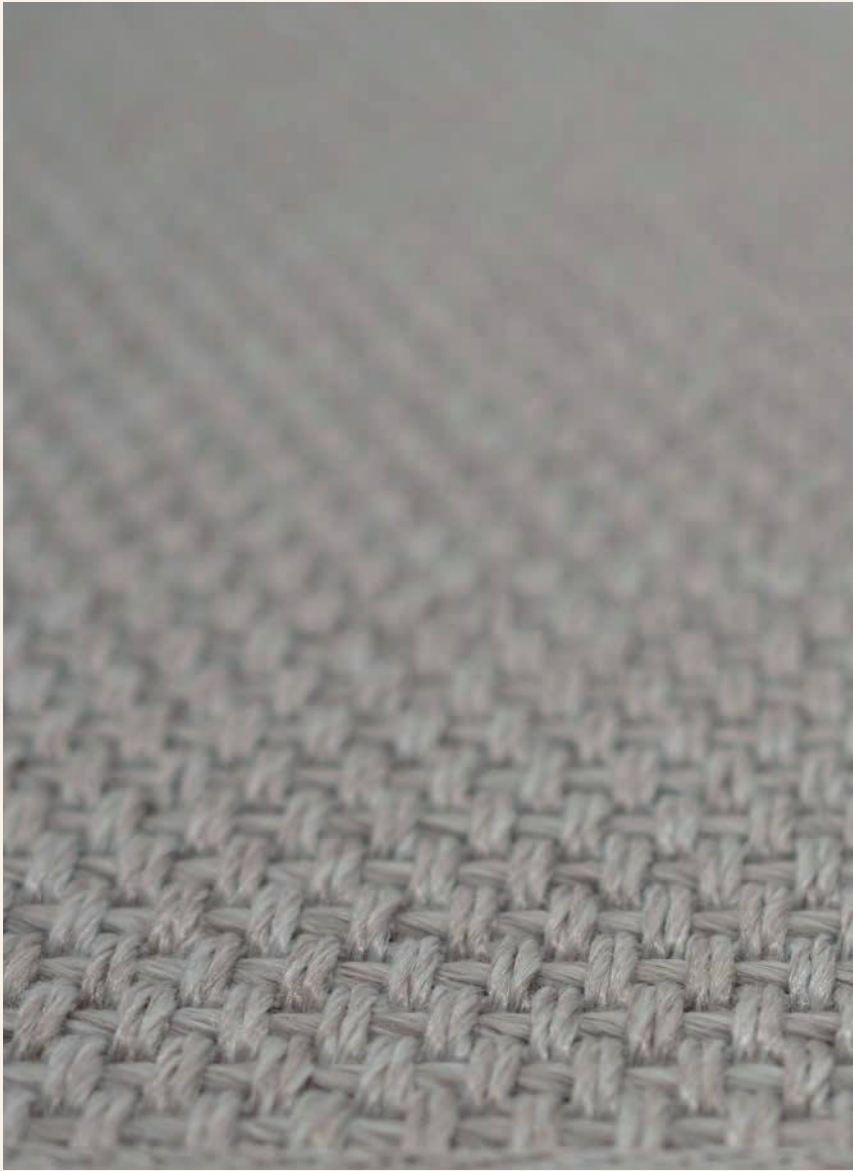


Lares 61204

durability and
design

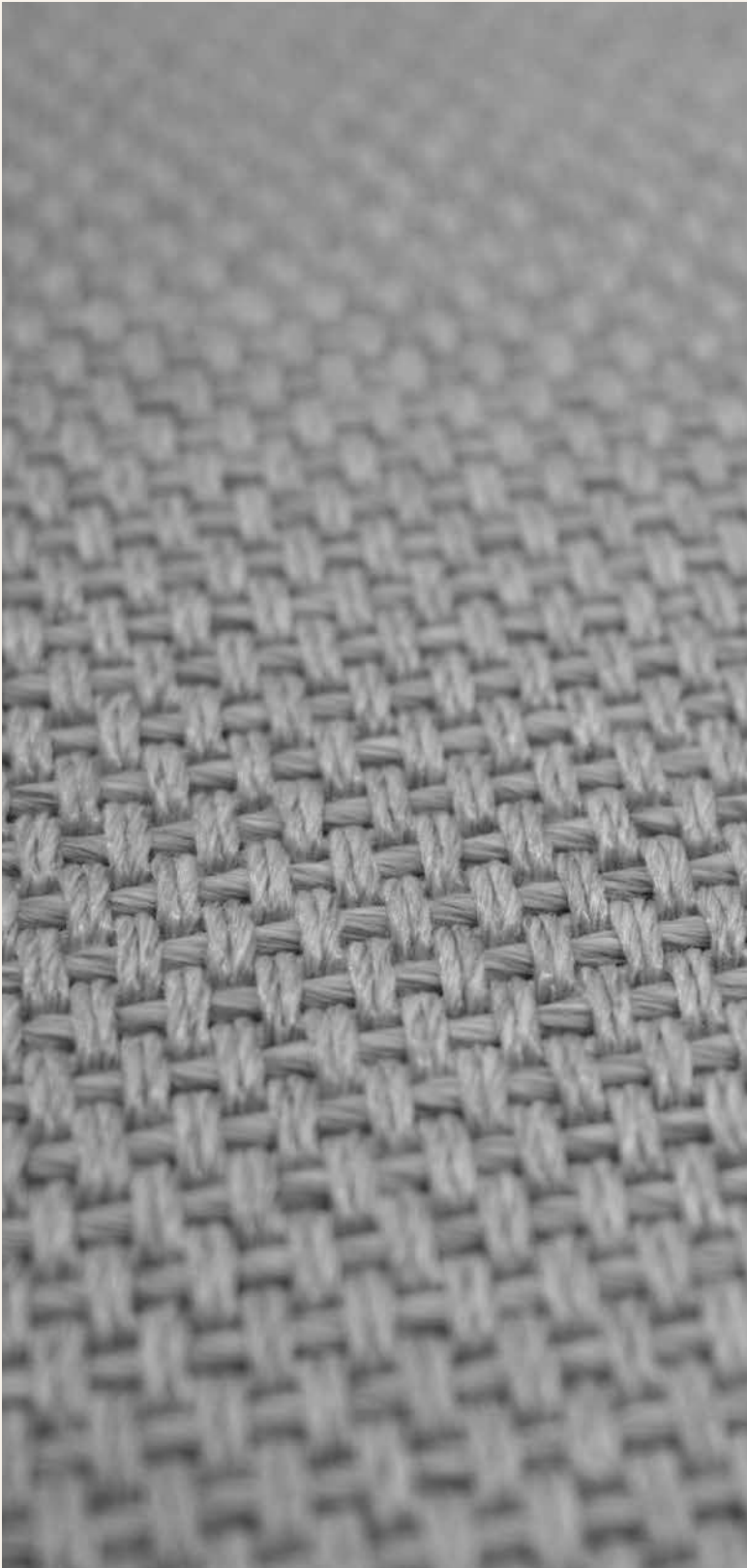


Lares 61204



Lares 61201

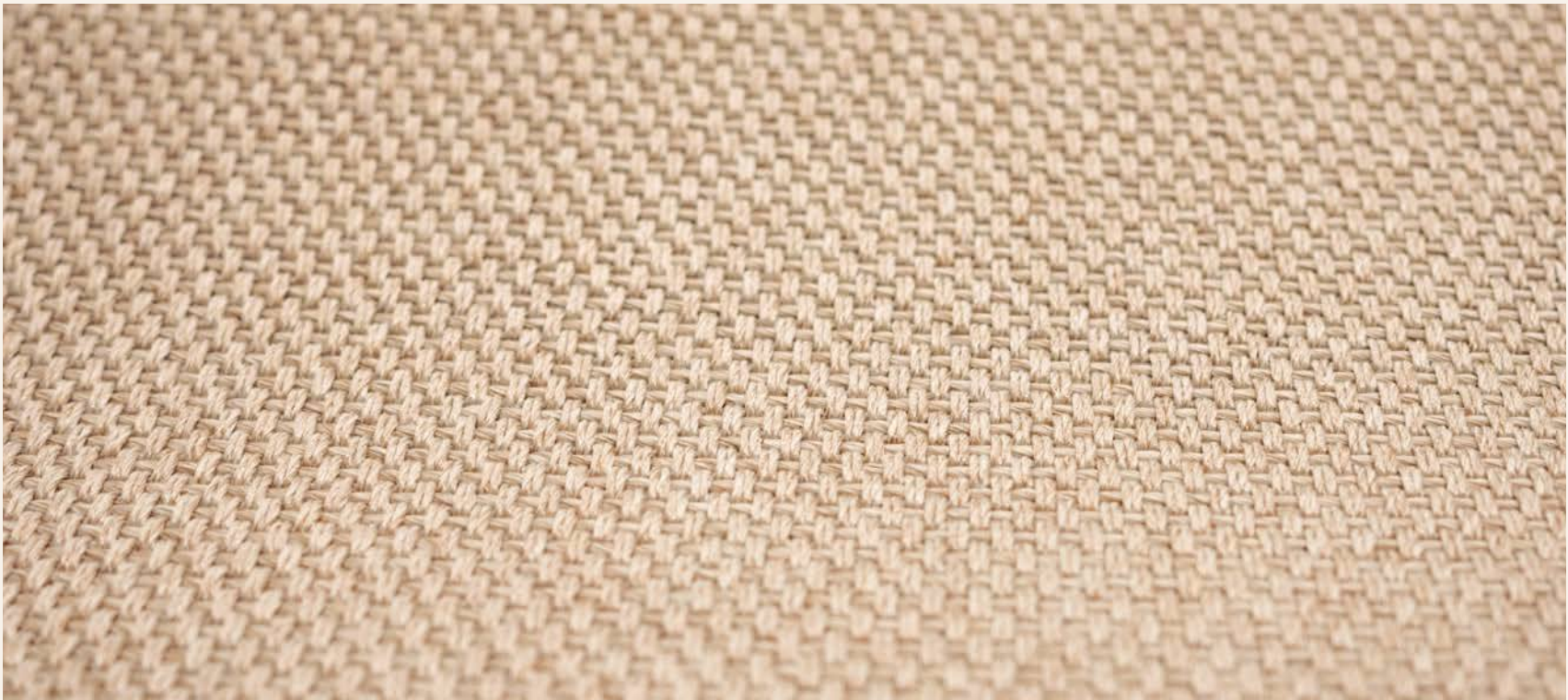
sustainable
future



Lares 61201



Lares 61203



VONDOM

1

VINEYARD & THE FACTORY
Collections

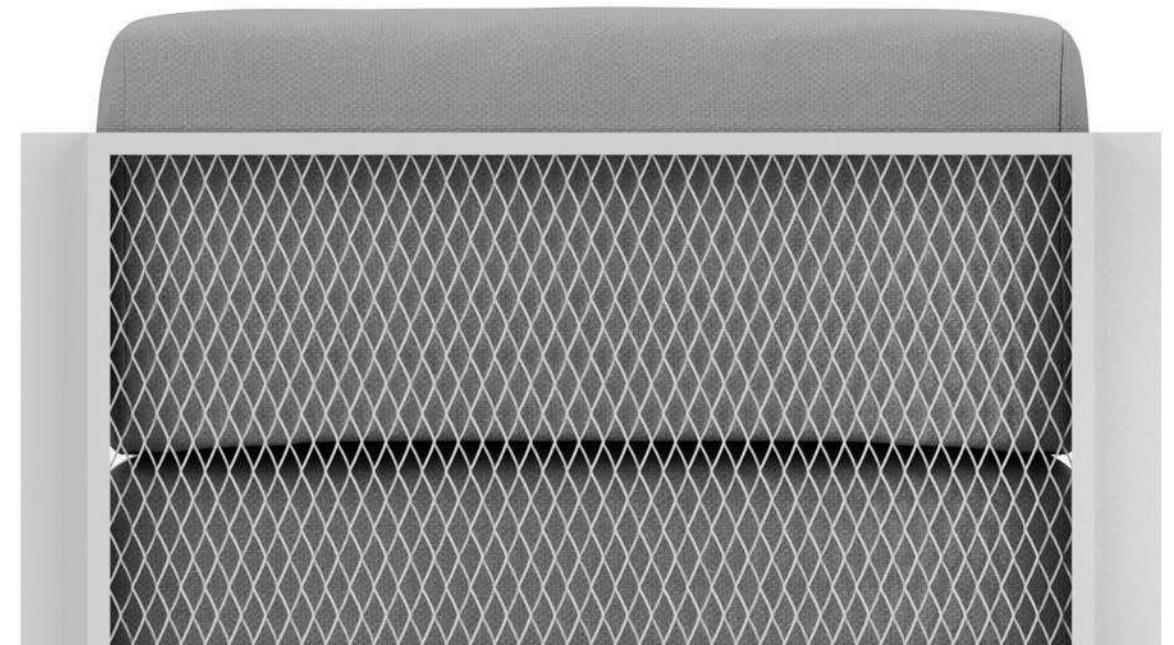
01 VINEYARD



2

3

02 THE FACTORY



A peaceful summer afternoon. A place to relax and enjoy the warm breeze amongst the trees, and the surrounding sound of nature. A moment of calm and tranquility, to connect with each other and oneself.

We manufacture designer furniture pieces that seem to interact with our senses, and favour us to enjoy those peaceful moments, this is Vondom's new philosophy, within the outdoor furniture industry. A different path that enriches the firm's offer within the sector, incorporating alternative product lines that complement the existing ones through spontaneous products that are linked to nature and tradition.

This spirit materializes through new and prominent textures, noble materials and fabrics bringing Vondom closer to other types of warmer and more serene spaces.

VONDOM



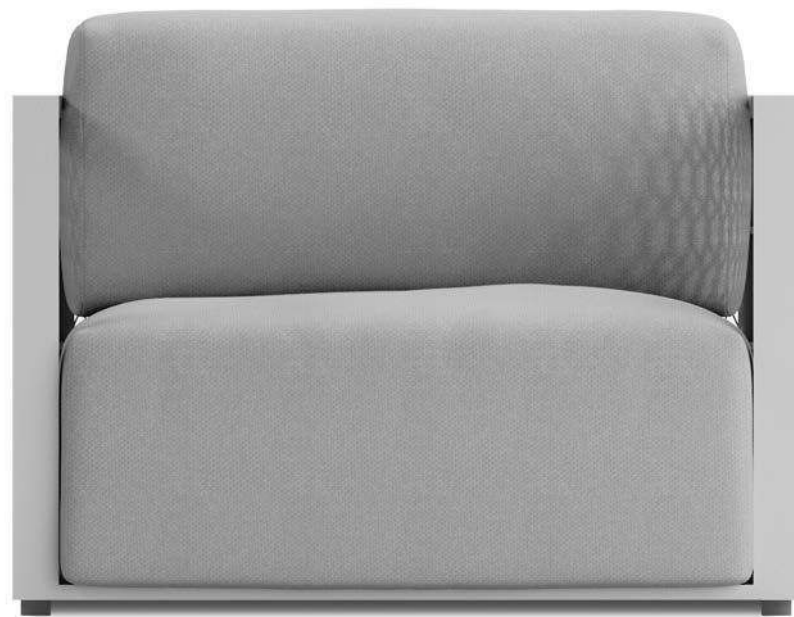


Ramón Esteve

01



VINEYARD



The Factory
lounge chair



01 VINEYARD



The *Vineyard* collection was designed *ad hoc* by Ramón Esteve himself, for his own country house. These pieces were conceived in harmony with the house itself, just like a common language based on the introduction of wooden slats, framed by a lacquered aluminum profile, combined with its upholstery.

The *Vineyard* collection is composed by ample and comfortable modules, with industrial wheels to help move these modules, creating a versatile and easily combinable set.



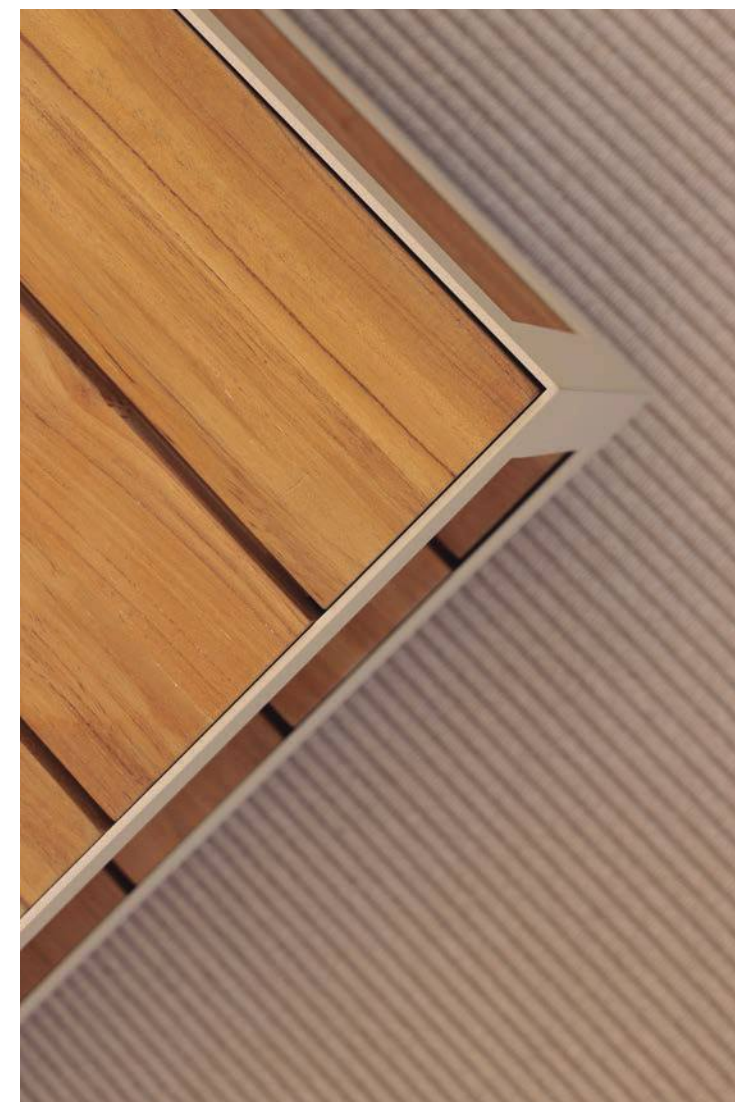


Versatile
Comfortable
Warmly
Sustainable
Timeless

Sofa and coffee table set.
Teak and aluminium.

Vineyard side table.
Teak and aluminium.

(P. 11)
Sofa, armchairs and center
table set. Teak and aluminium.





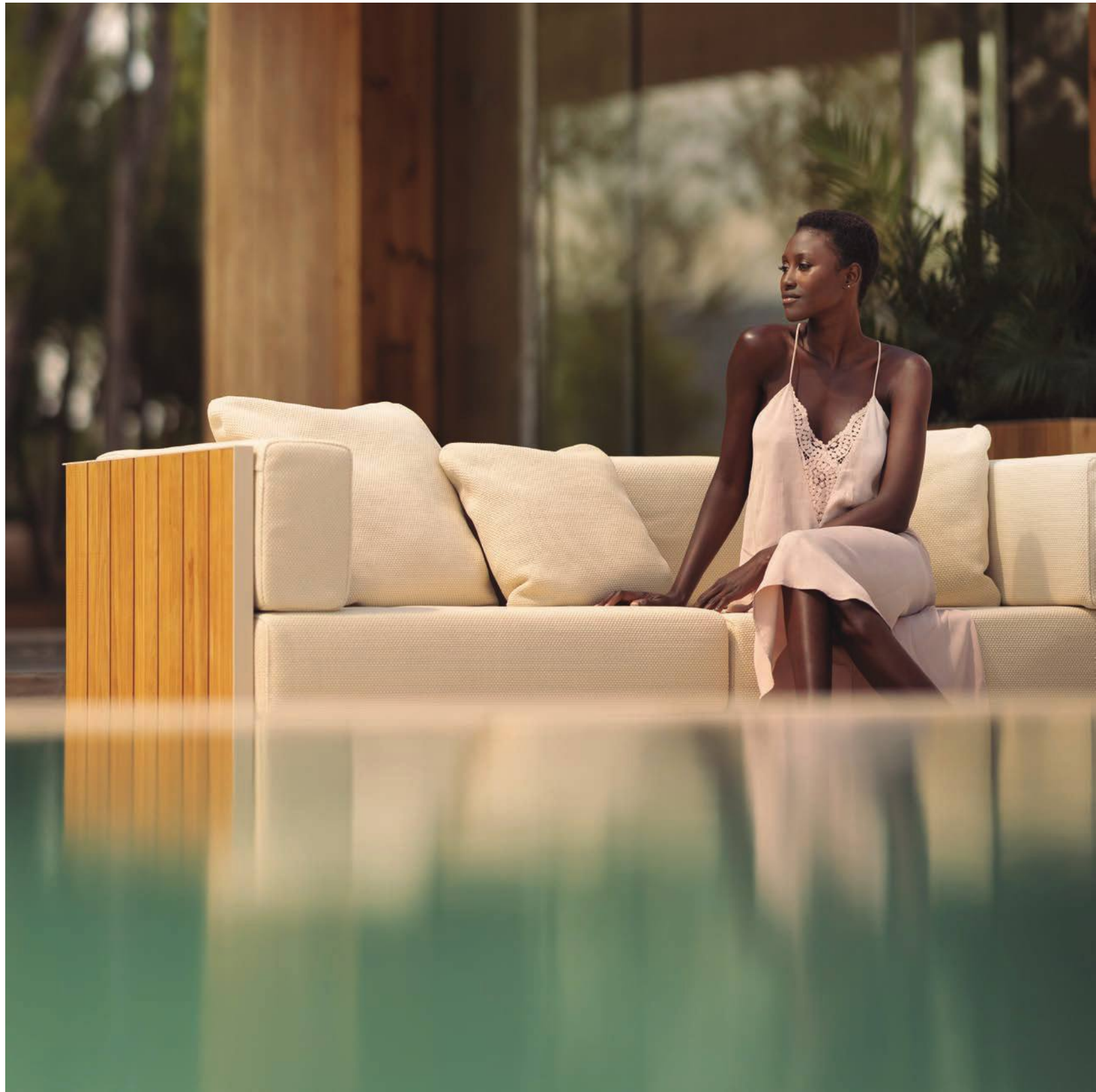
Vineyard Dining table and chairs.
Teak and aluminium.

(P. 14)
Vineyard planters.
Teak and aluminium.

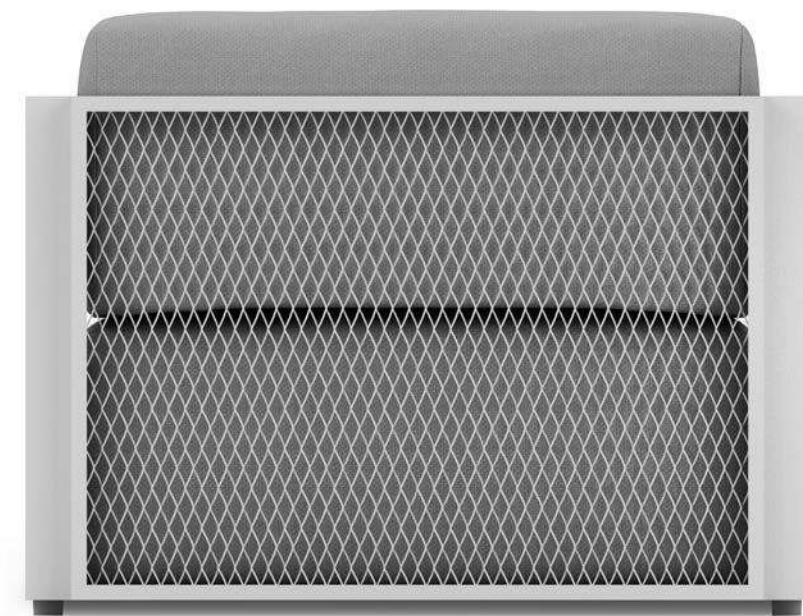
(P.15)
Vineyard Sun loungers.
Teak and aluminium.







02



THE FACTORY



The Factory
lounge chair



02 THE FACTORY



The Factory collection, designed by Ramón Esteve for Vondom, is characterized by its aluminium profile structure and deployée mesh.

Inspired by New York's cast-iron architecture, this collection breathes and industrial air just like some districts of the city such as Tribeca or Soho. At the same time, the contrast of its generously proportioned upholstered cushions gives this collection a warm and friendly touch.





(P. 19 / P. 21 / P. 22)
The Factory lounge chair,
sofa and side table set.
Aluminium and deployée.

Deployée mesh detail.



The Factory coffee table.
Aluminium and deployée.

(P. 25)
The Factory sun lounge.
Aluminium and deployée.





Gracious
Limpid
Decisive
Comfortable
Industrial





VONDOM

HEAD QUARTERS - FACTORY

VONDOM S.L.U.
Poligono 6, 16
46293 - Beneixida, Valencia - Spain
t.: +34 96 239 84 86 info@vondom.com

Latinoamérica

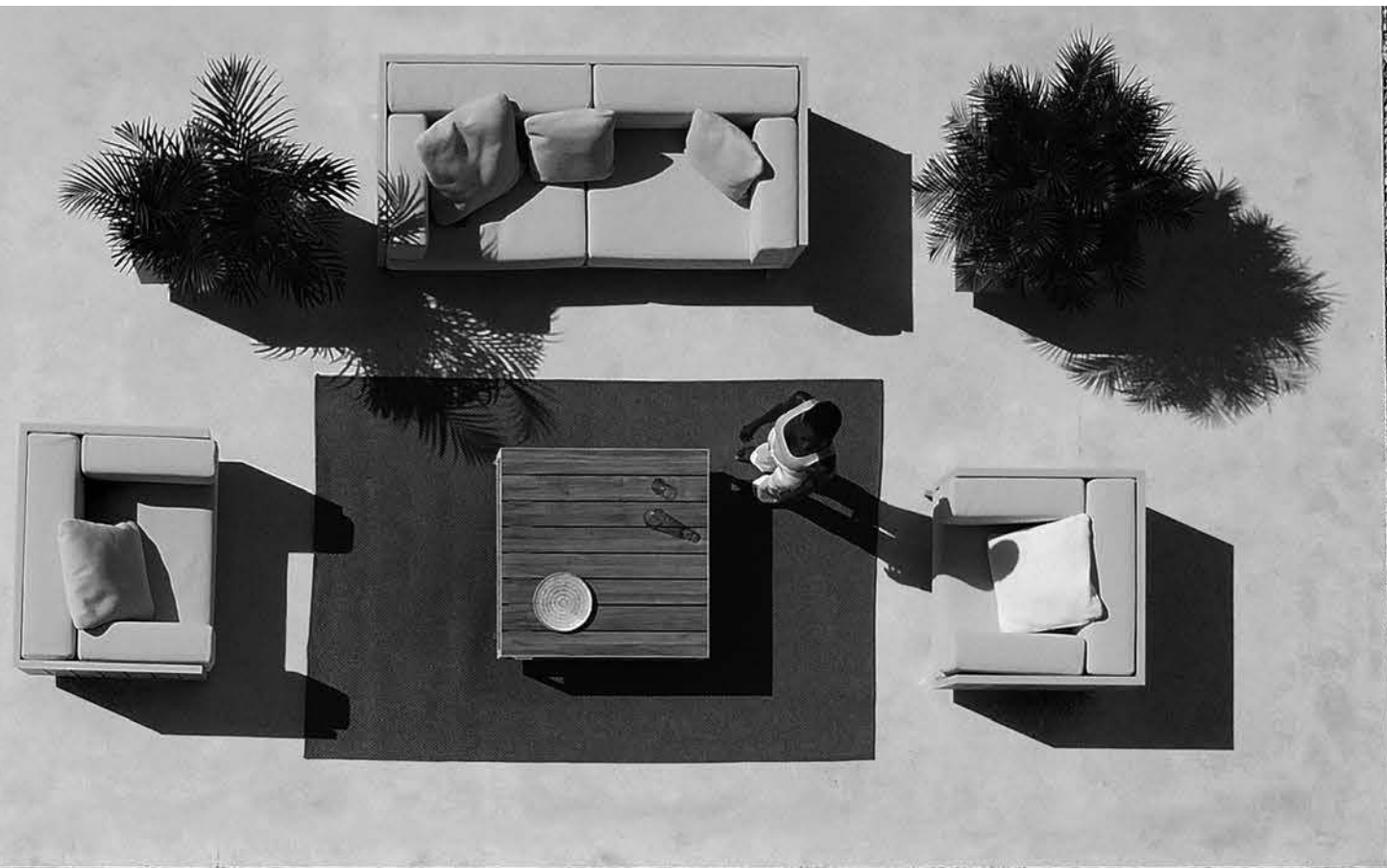
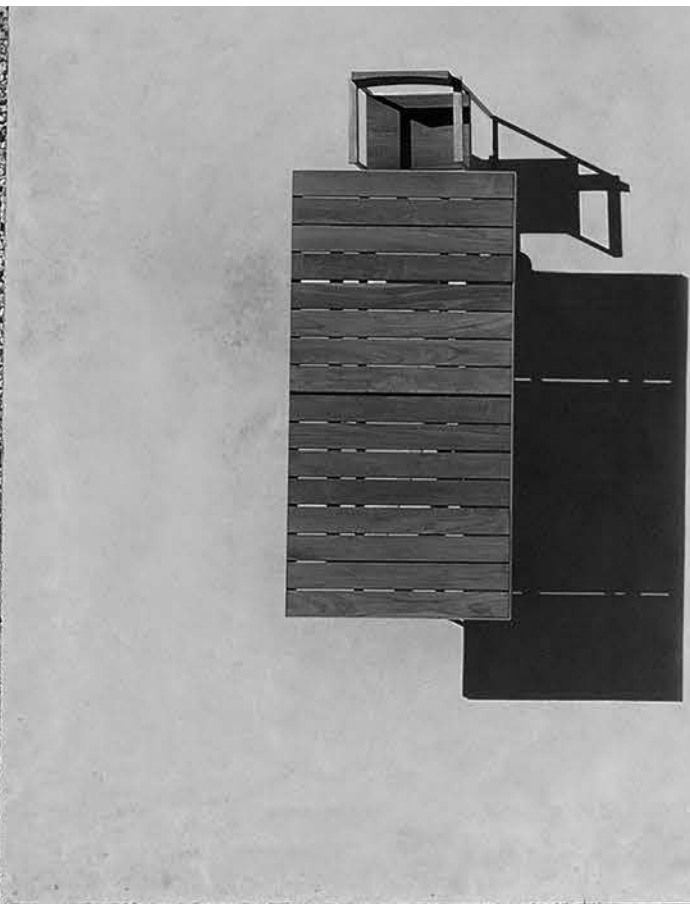
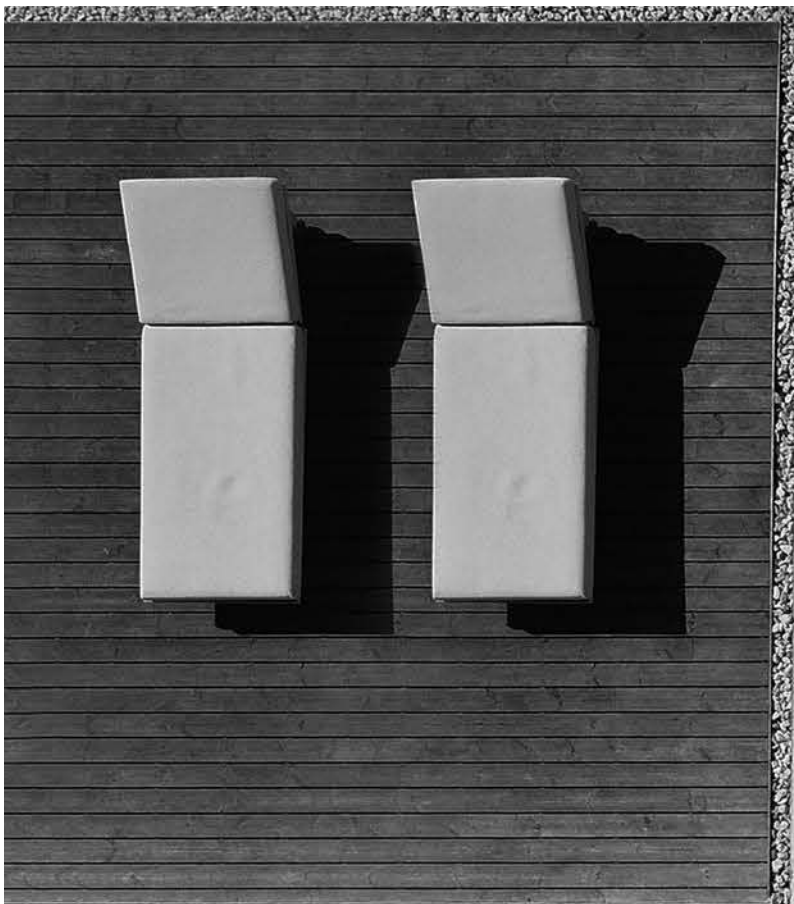
VONDOM MEXICO
Presidente Masaryk 42 11580 Polanco V Sección.
Ciudad de México
ventasmx@vondom.com

USA

VONDOM LLC
8803 NW 23rd Street, Miami, FL 33172 - USA
ph.: +1 786 391 0274 - +1 786 353 9108
infousa@vondom.com

China

VONDOM Lifestyle Design Co., Ltd.
C6-103, No. 700, Wan Rong Road, Jing An
200072 - Shanghai - China - +86 21 6521 9916
infochina@vondom.com



Designer / Creative



The Catalan designer Eugeni Quitllet was born on 17th April 1972 in Ibiza. He graduated from 'La Llotja' art school in Barcelona. Through his creative vocabulary he exceeds simple relationships between function and style unveiling innovative objects. Between drawing, sculpture and contemporary archaeology, Quitllet literally reveals silhouettes hidden in the material, extremely visual skeletal objects elegantly master fullness and emptiness often with a touch of humour. Eugeni Quitllet is a design world freak capable of devouring the whole of our environment in his own way to serve it up to us transformed.

Eugeni Quitllet



Tulum

TU-LUM is a combination of top quality furniture pieces that create a space with a different dimension, it's indoor comfort outdoors and highly resistant to different weather conditions.

Tulum

“TU-LUM is much more than just a collection, it´s a place, it´s just like an intimate space where you can live and share experiences with the people you love the most and a place where dreams come true.



original shape

The achieved the perfect balance between natural and high-tech materials, an elegant but modern armony, that will not go unnoticed... like a magical sunset or the perfect evening in your favorite scenery!



África

A collection that was born with the best-seller model of the AFRICA chair and that continues to grow, following the same solution of comfort and the most refined and minimalist aesthetics.

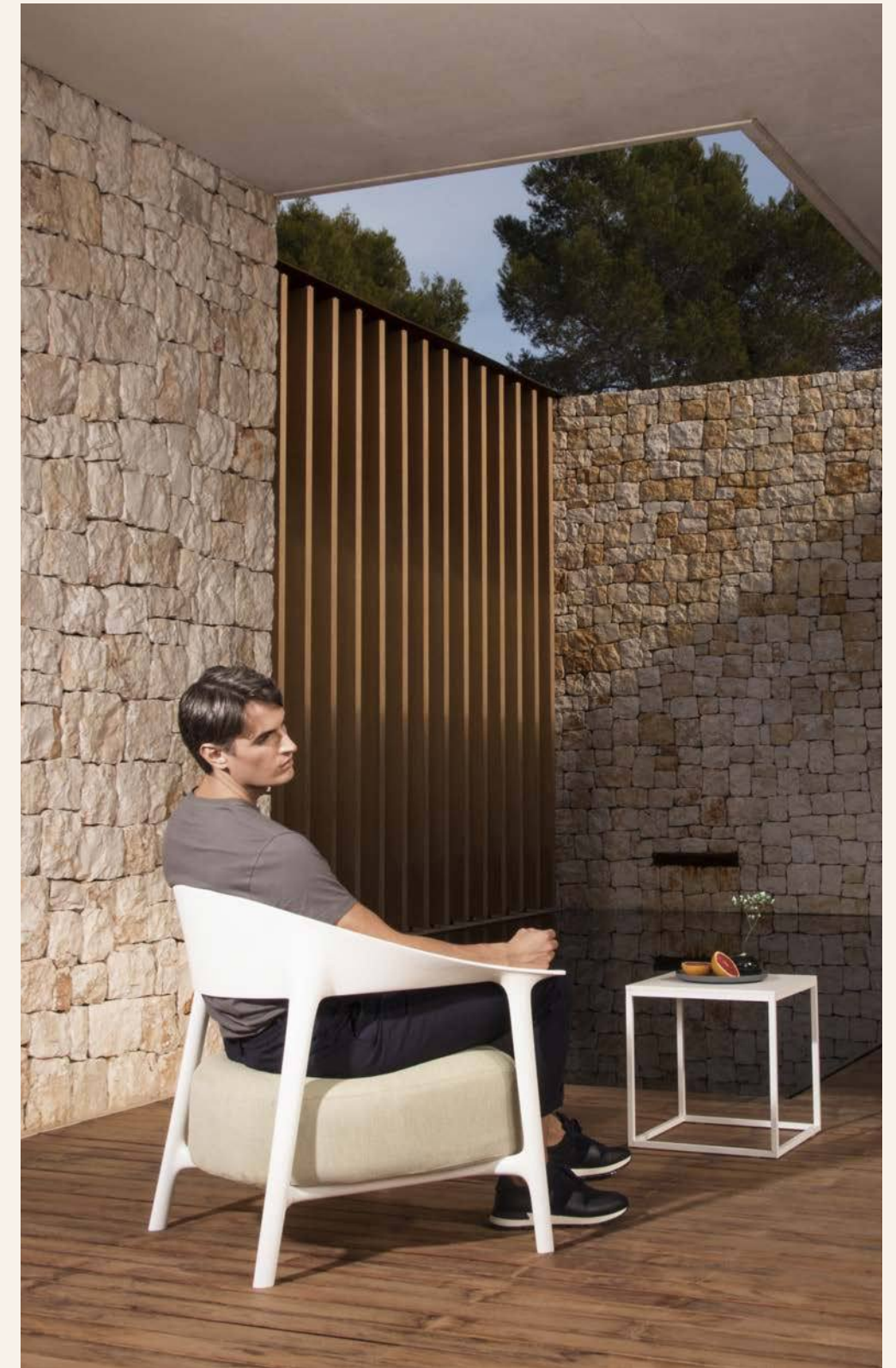




Armchair

A generous and beautiful seat, without taking up too much space, discreet and modern at the same time... a design that follows the natural curve of the human body, timeless like the rest of the collection, and that allows you to play with the combination of fabrics and finishes.

stylish
and modern



enjoy
the view



Ibiza

The collection, created by Eugeni Quitllet, now has a new addition: the stool. A piece that follows the same design patterns as the other items in the collection.



Stool

Its designer describes the stool as something which enables us to see the world from a higher position and thus to observe our surroundings better. It also allows us to enjoy even more the views offered by the space in which this creation is located.



Manta

The versatile Manta chair adapts perfectly to any space, whether in a home, office or public setting. This is all possible thanks to an interchangeable design made up of seats and bases to create countless combinations.

design and comfort

The curved shape of the polypropylene seat melds fluidly with the human body, like an object gently floating in the sea. The base can be personalized thanks to a wide range of materials, such as wood or metal, and wheels or a swivel feature can be added.



This designer chair can be used in homes, offices and public spaces. There are multiple combinations: colors, wood, metal and wheels.





resistance and resilience

This designer chair can be used in homes, offices and public spaces. There are multiple combinations: colors, wood, metal and wheels.

VONDOM

vondom.com

HEAD QUARTERS - FACTORY

VONDOM S.L.U.
Poligono 6, 16
46293 - Beneixida, Valencia - Spain
t.: +34 96 239 84 86 info@vondom.com

Latinoamérica

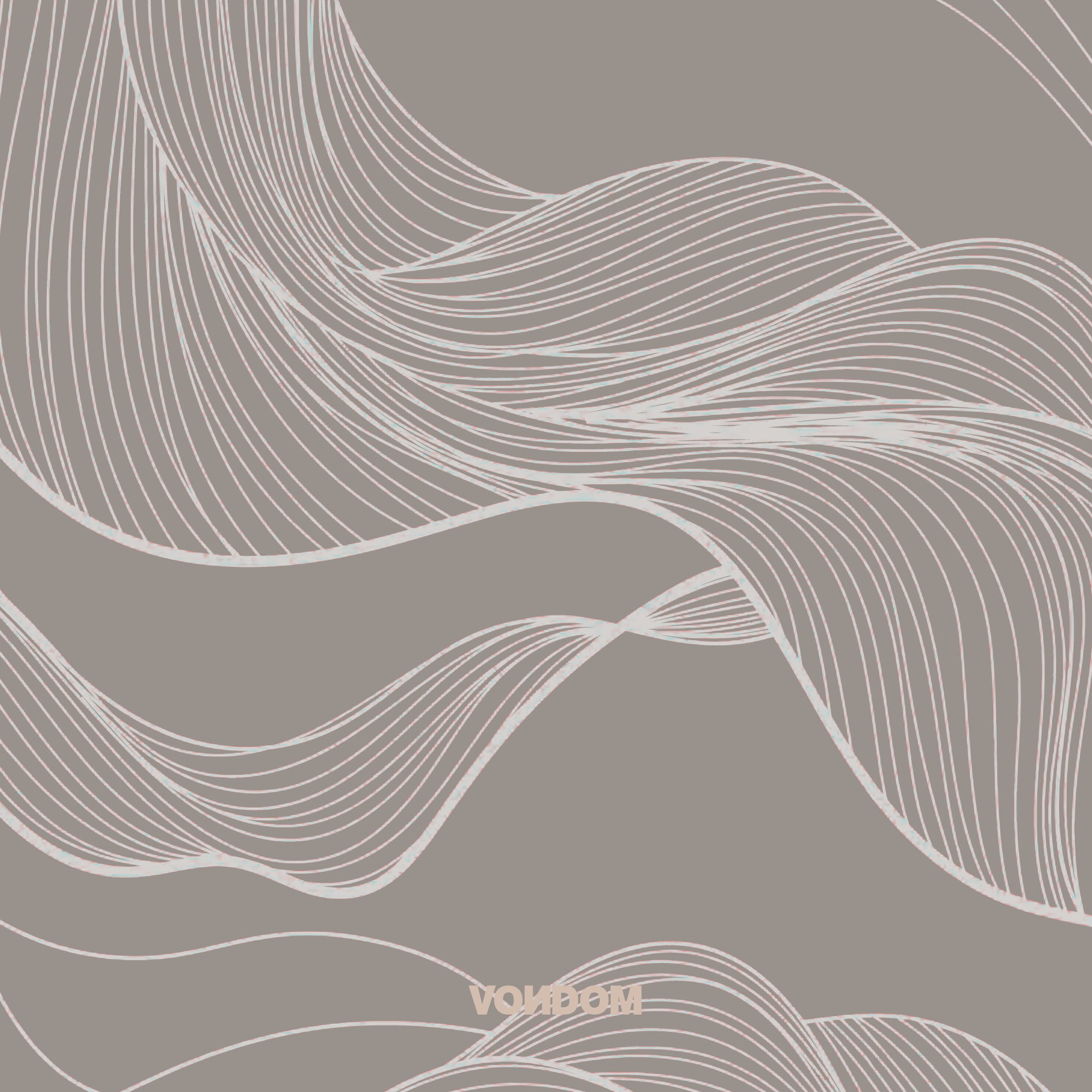
Gobernador Melchor Muzquiz 15 - 208
Col. San miguel Chapultepec 11850
Ciudad de México - México
latam@vondom.com

USA

VONDOM LLC,
8803 NW 23rd Street, Miami, FL 33172 - USA
ph.: +1 786 391 0274 - +1 786 353 9108
infousa@vondom.com

China

VONDOM Lifestyle Design Co., Ltd.
C6-103, No. 700, Wan Rong Road, Jing An
200072 - Shanghai - China - +86 21 6521 9916
infochina@vondom.com



VONDOM